

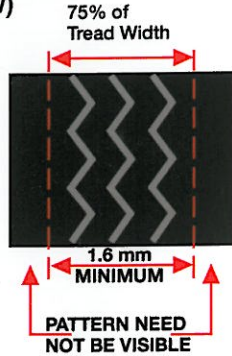
# TYRES AND THE LAW

## MINIMUM LEGAL TREAD DEPTH

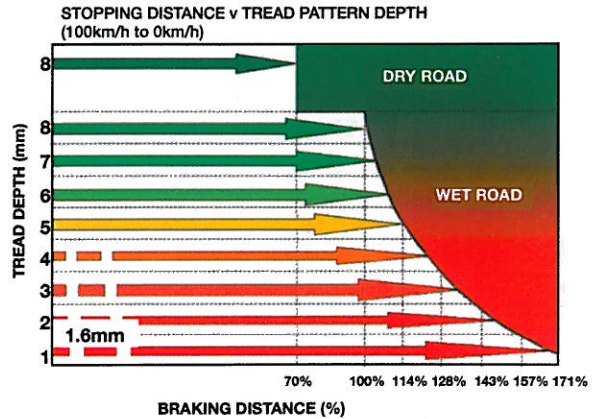
Car & Light Commercial Vehicles  
(Up to 3500Kgs GVW)



**THE MINIMUM TREAD GROOVE DEPTH IS 1.6 mm**



## EFFECT OF TREAD DEPTH ON BRAKING DISTANCES



## CORRECT INFLATION



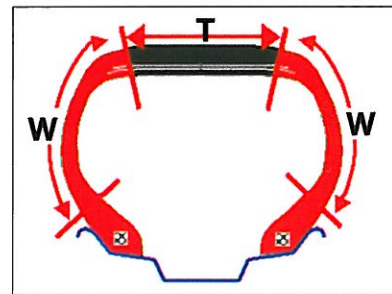
**THE LAW REQUIRES TYRES TO BE INFLATED TO A PRESSURE APPROPRIATE FOR THE APPLICATION.**

**REFER TO TYRE PRESSURE DISPLAYED ON VEHICLE**

## COMMON TYRE DAMAGES



## TYRE REPAIRS ACCORDING TO BRITISH STANDARDS BS AU 159



Cross Ply & Radial Ply	Area 'T'	Area 'W'
All Sizes & Speed ratings	6 mm max. hole size	Not Allowed

AREA 'T' IS DEFINED AS A PERCENTAGE OF THE NOMINAL SECTION WIDTH

NOMINAL SECTION WIDTH	AREA 'T'
Up to and including 155 mm	60%
Above 155 mm to 200 mm	65%
Above 200 mm	70%

Note: There shall be no limit to the number of MINOR REPAIRS in area 'T' providing the repair patches do not overlap.